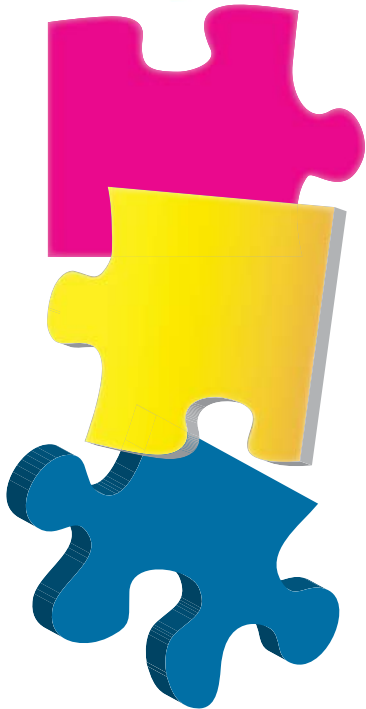


Autism Assessment



Tulare County Office of Education Presenters:

Dr. Eileen Wright, Ph.D.

Director, The Bright Future Program

Jill Santivanez

Program Manager

- ▶ September 28, 2010
- ▶ 8:30 a.m. to 3:30 p.m.
- ▶ Sequoia Room,
Tulare County Office of Education
7000 Doe Ave., Visalia

This workshop will address current issues in autism and how to effectively assess a child with autism and similar disorders. This workshop will focus on children with ASD and behavior problems. This presentation will focus on the following:

- Instruments to use in the assessment such as ADOS, PEP-3, GARS, GADS, FAST and the Vineland II.
- The referral process for Special Education
- What should be included in psychological referral reports
- Areas of concern regarding individual student referrals to the SH program
- Writing defensible reports
- Current issues in Autism and behavior
- The National Standards Project Report

Target Audience:

Special Education Teachers, Psychologists, Speech and Language Specialists, Site Administrators, Directors of Special Education. Limited to 110 participants.

REGISTER ONLINE for this workshop by logging on to the OMS event calendar.

Go to <http://tulare.k12oms.org>

- 1) Locate the workshop on the calendar and click on the name of the event;
- 2) Follow prompts to register for the event;
- 3) Click on the "submit" button.

TULARE COUNTY/ DISTRICT
SPECIAL EDUCATION LOCAL PLAN AREA

SPECIAL EDUCATION

If you need accommodations for a disability to attend the workshop, please let us know.

*Coffee, Tea & Water
Provided*



3 CPDUs available from Tulare County Office of Education (PDP 50) for licensed Speech/ Language Specialists. Course meets the qualifications for 3 hours of continuing professional development credits as required by the California Speech/ Language Pathology & Audiology Board.

6 CEUs available from Tulare County Office of Education (PCE 1905) for MFT and/or LCSW. Course meets the qualifications for 6 hours of continuing education credit as required by the California Board of Behavioral Sciences.

6 hours National School Psychologist Certification available.