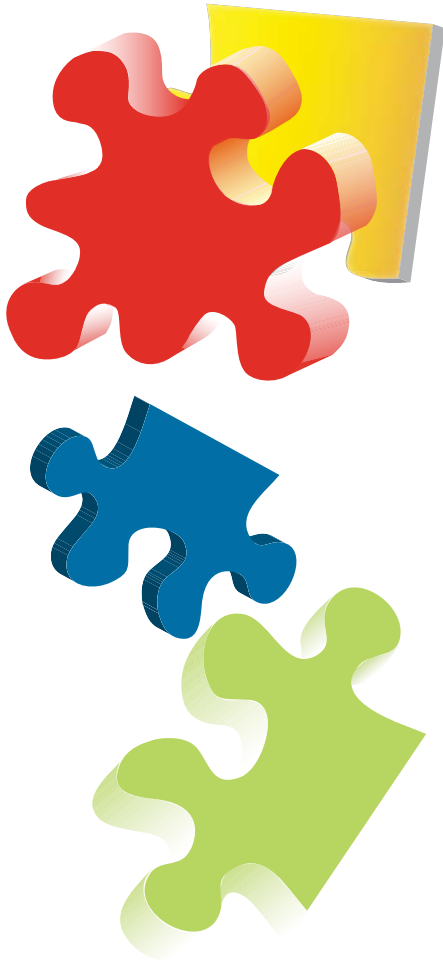


Preventing Expulsion from Preschools: Designing Classrooms to Develop Essential Skills in All Children



Gregory P. Hanley, Ph.D., BCBA-D

- ▶ December 16, 2010
- ▶ 8:30 a.m. to 4:00 p.m.
- ▶ Elderwood Room
Tulare County Office of Education
7000 Doe Ave., Visalia

Considering the demonstrated advantages of quality preschool experiences on subsequent school success, the fact that preschoolers have the highest rate of expulsion (compared to children in grades 1 through 12) is alarming. This full-day seminar will provide attendees with an understanding as to (a) why preschoolers engage in problem behavior, (b) the classroom conditions under which problem behavior is most likely to develop or persist, and (c) the actions of administrators, consultants, and teachers that will prevent the development of problem behavior by the preschoolers for whom they provide services.

Target Audience:

Preschool Teachers and Administrators,
Speech/Language Specialists,
Psychologists,
BCBA Practicum Students
Limited to 75 participants

REGISTER ONLINE for this workshop by logging on to the OMS event calendar.

Go to <http://tulare.k12oms.org>

- 1) Locate the workshop on the calendar and click on the name of the event;
- 2) Follow prompts to register for the event;
- 3) Click on the “submit” button.



If you need accommodations for a disability to attend the workshop, please let us know.

*Coffee, Tea & Water
Provided*



3 CPDUs available from Tulare County Office of Education (PDP 50) for licensed Speech/ Language Specialists. Course meets the qualifications for 3 hours of continuing professional development credits as required by the California Speech/ Language Pathology & Audiology Board.

6 CEUs available from Tulare County Office of Education (PCE 1905) for MFT and/or LCSW. Course meets the qualifications for 6 hours of continuing education credit as required by the California Board of Behavioral Sciences.

6 hours National School Psychologist Certification available.

6 BCBA credits.