

## **SECTION II**

### **DEVELOPMENT OF THE LOCAL PLAN**

[EC 56001.(f); 56195.1 (b) - (c); 56195.3 (a) – (d); 56195.9]

Education programs are provided under an approved local plan for special education that sets forth the elements of the programs. The Tulare County/District Special Education Local Plan Area shall comply with EC 56140 in the development of the local plan [EC 56207.5 (a)].

The governing boards of LEAs in Tulare County elect to join with the Tulare County Office to submit a local plan to assure access to special education and services for all individuals with exceptional needs residing in the geographic area served by the plan [EC 56195.1 (b) - (c)].

The Tulare County/District Special Education Local Plan Area (SELPA) coordinates the implementation of the local plan [EC 56205 (a) (12) (D) (i), 56195.1 (b) (3)].

The local plan for special education has been developed and updated cooperatively by a committee of representatives of special and regular teachers and administrators selected by the LEAs/groups they represent and with participation by parent members of the Community Advisory Committee, or parents selected by the Community Advisory Committee, to ensure adequate participation and communication [EC 56195.3 (a)]. In developing the local plan, each LEA in Tulare County has involved special and general teachers selected by their peers and parents selected by their peers in an active role.

Each LEA in Tulare County has cooperated with the Tulare County Office of Education to assure that the plan is compatible with county plans of contiguous counties [EC 56195.3 (c)].

The developed local plan is reviewed by the Community Advisory Committee. The Community Advisory Committee has 30 days to conduct the review prior to submission of the plan to the Tulare County Office [EC 56205 (b) (6)]. Upon review of the Community Advisory Committee, the proposed local plan is submitted to the Tulare County Office for review [EC 56195.3 (d)].

The Tulare County Office and each LEA governing board have authority over the programs it directly maintains, consistent with the approved local plan, [EC 56195.5(a)] and may provide for the education of individual pupils in special education programs maintained by other LEAs in the SELPA, or by contractual agreement other counties, and may include within the special education program students who reside in other LEAs or counties. [EC 56195.5 (b)]

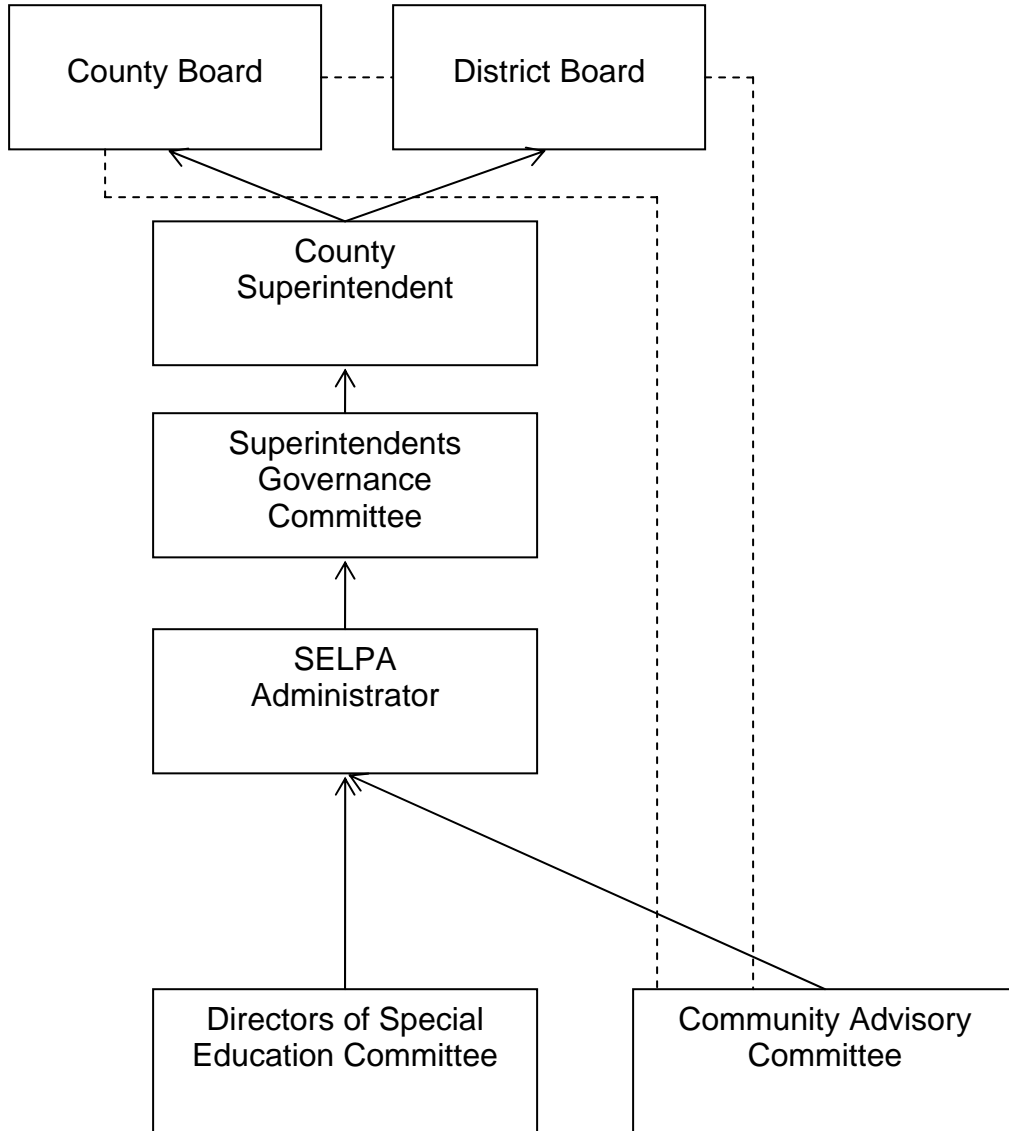
**A. ANNUAL SERVICE PLAN [56205 (b) (2)]**

The Tulare County/District Special Education Local Plan Area shall submit an annual service plan at a public hearing. Notice for the hearing shall be posted in each LEA in the SELPA at least 15 days prior to the hearing. The annual service plan may be revised during any fiscal year in accordance to the policy making process established by the Tulare County/District SELPA.

The annual service plan shall include a description of services to be provided by each LEA and the County Office, including the nature of the services and the physical location at which the services will be provided, including alternative schools, charter schools, opportunity schools and classes, community day schools operated by LEAs and community/juvenile court schools operated by the Tulare County Office of Education, and out-of-the-geographic area charter LEAs. This description shall demonstrate that all individuals with exceptional needs shall have access to services and instruction appropriate to meet their needs as specified in their individualized education programs.

**B. PROCESS FOR MODIFYING THE LOCAL PLAN [EC 56205 (a) (12) (D)**  
**(i)**

The SELPA Administrator is responsible for taking the recommended changes to the Local Plan through the channels of the management structure to institute necessary changes and modifications of the local plan.



**C. LOCAL PLAN REVISION COMMITTEE [56205 (a) (12) (D) (i)]**

The local plan revision committee is comprised of the following Superintendents, Directors of Special Education and regular and special education teachers and parents from the Tulare County/District Special Education Local Plan Area:

**Region I (Northern Tulare County)**

Director of Special Education, Farmersville Unified  
Director of Special Education, Lindsay Unified  
Director of Special Education, Exeter Union  
Director of Special Education, Dinuba Unified  
Director of Special Education, Cutler-Orosi Unified  
Director of Special Education, Woodlake Union  
Superintendent, Farmersville Unified  
Superintendent, Lindsay Unified  
Superintendent, Dinuba Unified  
Superintendent, Woodlake Union  
Superintendent, Cutler-Orosi Unified  
Superintendent, Exeter Union  
Community Advisory Committee, General Education Teacher  
Community Advisory Committee, Special Education Teacher

**Region II (Central Tulare County)**

Director of Special Education, Visalia Unified  
Superintendent, Visalia Unified  
Community Advisory Committee, Exceptional Individual  
Community Advisory Committee, Agency Representative

**Region III (Southwest Tulare County)**

Director of Special Education, Tulare City Elementary  
Director of Special Education, Tulare Joint Union High  
Director of Special Education, Earlimart Elementary  
Director of Special Education, Pixley Union Elementary  
Superintendent, Earlimart Elementary  
Superintendent, Sundale Union Elementary  
Superintendent, Tulare City Elementary  
Superintendent, Tulare Joint Union High  
Community Advisory Committee, Special Education Parent  
Community Advisory Committee, General Education Parent

**Region IV (Southeast Tulare County)**

Director of Special Education, Burton Elementary  
Director of Special Education, Porterville Unified  
Director of Special Education, Terra Bella Union Elementary  
Superintendent, Burton Elementary  
Superintendent, Springville Union Elementary  
Superintendent, Porterville Unified  
Community Advisory Committee, Special Education Parent  
Community Advisory Committee, Administrator

**Tulare County Office of Education**

Superintendent, County Office of Education  
Assistant Superintendent/SELPA Administrator

**D. NOTIFICATION OF ALTERNATIVE PLAN:**

Each LEA within the Tulare County/District Special Education Local Plan Area will cooperate with the Tulare County Office of Education and the other LEAs within Tulare County in planning its option under EC 56195.1. Each fiscal year, a LEA will notify the LEAs and the Tulare County Office of Education of its intent to elect an alternative option from those specified in EC 56195.1, at least one year prior to the proposed effective date of the implementation of the alternative plan. [EC 56195.3 (b)]