

COMMUNITY ADVISORY COMMITTEE

GET INVOLVED, BE INFORMED, MAKE A DIFFERENCE

2024-2025



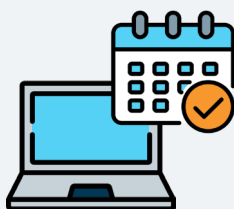
WHY GET INVOLVED?

- Improve your knowledge of Special Education.
- Meet and share ideas with other parents who have similar interests.
- Be informed about local programs & events created specifically for students and adults with disabilities.
- Provide your input to school professionals and community members who work with people with special needs.



JOIN US!

The Tulare County SELPA Community Advisory Committee (CAC) is looking for individuals who are interested in working alongside parents, teachers, students, community members, and school professionals to increase awareness of the needs and abilities of special education students. We understand that effective Special Education requires collaboration, creativity, and community—and we welcome your ideas! To get involved and make a difference or find out about becoming a member, please join us at our next meeting.



MEETING DATES:

Meetings are from 9:00 am – 10:30 am and are open to the public with a zoom option available. For information about location, zoom links, or to view agendas and minutes, visit: www.tulareselpa.org/cac

- September 5, 2024
- October 10, 2024
- November 14, 2024
- December 12, 2024
- February 20, 2025
- March 6, 2025
- April 10, 2025
- May 15, 2025



FOR QUESTIONS CONTACT:
Malinda Furtado, Parent Liaison
(559) 730-2910 ext. 5125
malinda.furtado@tcoe.org

CAC
COMMUNITY
ADVISORY
COMMITTEE



TULARE COUNTY
SPECIAL EDUCATION
SPECIAL EDUCATION LOCAL PLAN AREA